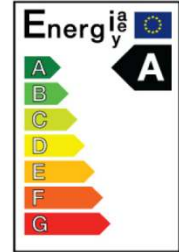


**SAMSUNG LED PAR 16 / 6.5W / GU 10 / 25° / 2700K**

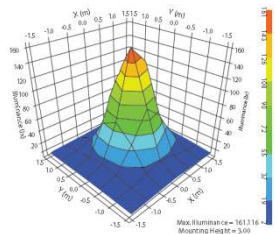
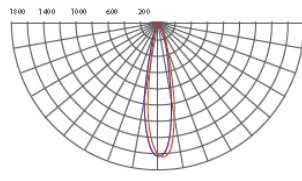
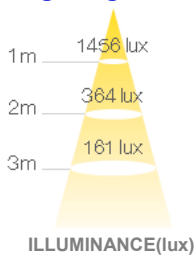
**Product**



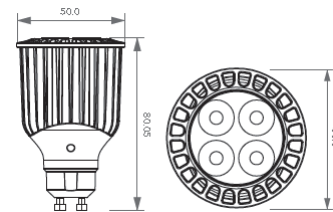
<b>Maker</b>	Samsung LED GmbH
<b>Brand</b>	Samsung LED
<b>Model Code / EAN Code</b>	STIMLW8270701BB / 8809296768210
<b>Voltage</b>	220~240V
<b>Power Consumption</b>	6.5W
<b>Type of Lamp</b>	LED lamp with integrated ballast
<b>Lamp Socket holder</b>	GU 10



**Lighting Data**



**Dimensional drawing**



**Specifications**

<b>Type</b>	PAR16	<b>Beam Angle (°)</b>	25
<b>Equivalent to (W)</b>	35	<b>Operating temperature (°C)</b>	-20~+40
<b>Wattage (W)</b>	6.5	<b>Average Lifetime (hrs)</b>	40,000
<b>Lumen Output (lm)</b>	350	<b>Colour Description</b>	Warm White
<b>Lamp efficacy (lm/W)</b>	54	<b>Colour Temperature (K)</b>	2725±145
<b>Voltage (V)</b>	220~240	<b>Colour Rendering Index (Ra)</b>	80
<b>Frequency (Hz)</b>	50/60	<b>Diameter (mm)</b>	50
<b>Input current (mA)</b>	48	<b>Overall Length (mm)</b>	80.1
<b>Power Factor</b>	-	<b>Dimmable</b>	Yes
<b>CBCP (cd)</b>	1360	<b>Weight (g)</b>	116

\* Specifications are subject to change without notice.

**Application**

- Ideal for accent lighting in retail displays, exhibition halls in art galleries, and museums.

**Packaging Details**

<b>Packaging Type(Std.Pkg.Q'ty)</b>	Single Box (1pc)	Middle Box (10pc/box)	Outer carton (60pc/box)
<b>Dimensions ( L×W×H )</b>	TBD	285mm×115mm×99mm	370mm×297mm×218mm
<b>Gross Weight (g)</b>	141	1521	9874

**Customer Benefits**

- Energy saving, high efficacy
- CCT: 7 steps
- Retrofit to conventional PAR16
- High Center Beam Power
- SAMSUNG Engineering Excellence
- Mercury Free