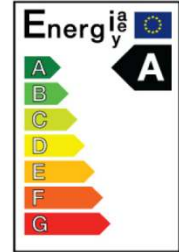


SAMSUNG LED PAR 16 / 3.9W / GU 10 / 25° / 2700K

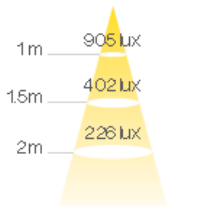
Product



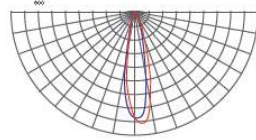
Maker	Samsung LED GmbH
Brand	Samsung LED
Model Code / EAN Code	STIMLW8270421BB / 8809296768135
Voltage	220~240V
Power Consumption	3.9W
Type of Lamp	LED lamp with integrated ballast
Lamp Socket holder	GU 10



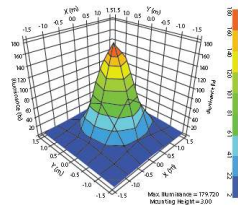
Lighting Data



ILLUMINANCE(lux)

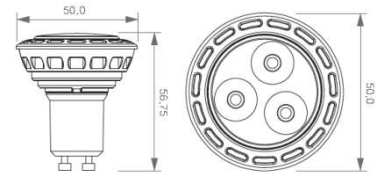


LIGHT DISTRIBUTION



OPTICAL Characteristics

Dimensional drawing



Specifications

Type	PAR16	Beam Angle (°)	25
Equivalent to (W)	20	Operating temperature (°C)	-20~+40
Wattage (W)	3.9W	Average Lifetime (hrs)	40,000
Lumen Output (lm)	230	Colour Description	Warm White
Lamp efficacy (lm/W)	59	Colour Temperature (K)	2725±145
Voltage (V)	220~240	Colour Rendering Index (Ra)	80
Frequency (Hz)	50/60	Diameter (mm)	50
Input current (mA)	35	Overall Length (mm)	56
Power Factor	≥0.5	Dimmable	No
CBCP (cd)	880	Weight (g)	61

* Specifications are subject to change without notice.

Application

- Ideal for accent lighting in retail displays, exhibition halls in art galleries, and museums.

Packaging Details

Packaging Type(Std.Pkg.Q'ty)	Single Box (1pc)	Middle Box (10pc/box)	Outer carton (60pc/box)
Dimensions (L×W×H)	TBD	TBD	TBD
Gross Weight (g)	TBD	TBD	TBD

Customer Benefits

- Energy saving, high efficacy
- CCT: 7 steps
- Retrofit to conventional PAR16
- High Center Beam Power
- SAMSUNG Engineering Excellence
- Mercury Free