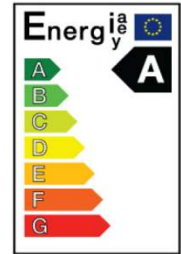


SAMSUNG LED MR 16 / 4W / GU 5.3 / 40° / 2700K

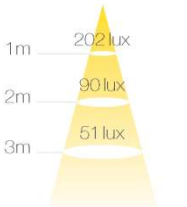
Product



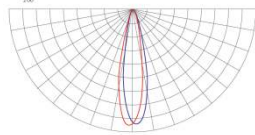
Maker	Samsung LED GmbH
Brand	Samsung LED
Model Code / EAN Code	STIMLW8270421AD / 8809296768067
Voltage	AC/DC 12V
Power Consumption	4W
Type of Lamp	LED lamp without ballast
Lamp Socket holder	GU 5.3



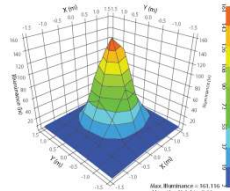
Lighting Data



ILLUMINANCE(lux)

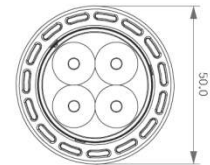
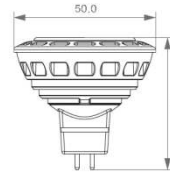


LIGHT DISTRIBUTION



OPTICAL Characteristics

Dimensional drawing



Specifications

Type	MR16	Beam Angle (°)	40
Equivalent to (W)	20	Operating temperature (°C)	-20~+40
Wattage (W)	4	Average Lifetime (hrs)	40,000
Lumen Output (lm)	200	Colour Description	Warm White
Lamp efficacy (lm/W)	50	Colour Temperature (K)	2725±145
Voltage (V)	AC/DC 12	Colour Rendering Index (Ra)	80
Frequency (Hz)	-	Diameter (mm)	50
Input current (mA)	440	Overall Length (mm)	49
Power Factor	-	Dimmable	No
CBCP (cd)	220	Weight (g)	49

※ Specifications are subject to change without notice.

Application

- Ideal for accent lighting in retail displays, exhibition halls in art galleries, and museums.

Packaging Details

Packaging Type(Std.Pkg.Q'ty)	Single Box (1pce)	Middle Box (10pc/box)	Outer carton (60pc/box)
Dimensions (L×W×H)	TBD	TBD	TBD
Gross Weight (g)	TBD	TBD	TBD

Customer Benefits

- Energy saving, high efficacy
- CCT: 7 steps
- Retrofit to conventional MR16
- Mercury Free
- Instant Light on
- Compatible to most existing MR 16 transformers (Recommended ballast list : appendix1)
- High Center Beam Power
- SAMSUNG Engineering Excellence