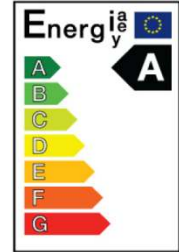


**SAMSUNG LED A60 / 10W / E27 / 130° / 2700K**

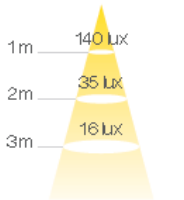
**Product**



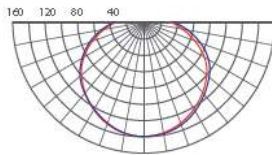
<b>Maker</b>	Samsung LED GmbH
<b>Brand</b>	Samsung LED
<b>Model Code / EAN Code</b>	STIILW827102113 / 8809296760191
<b>Voltage</b>	220~240V
<b>Power Consumption</b>	10W
<b>Type of Lamp</b>	LED lamp with integrated ballast
<b>Lamp Socket holder</b>	E27



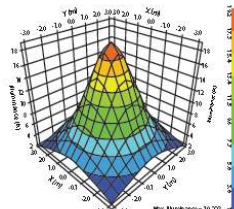
**Lighting Data**



ILLUMINANCE(lux)

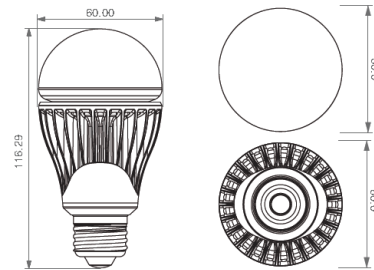


LIGHT DISTRIBUTION



OPTICAL Characteristics

**Dimensional drawing**



**Specifications**

<b>Type</b>	A60	<b>Beam Angle (°)</b>	130
<b>Equivalent to (W)</b>	50	<b>Operating temperature (°C)</b>	-20~+40
<b>Wattage (W)</b>	10	<b>Average Lifetime (hrs)</b>	40,000
<b>Lumen Output (lm)</b>	650	<b>Colour Description</b>	Warm White
<b>Lamp efficacy (lm/W)</b>	65	<b>Colour Temperature (K)</b>	2725±145
<b>Voltage (V)</b>	220~240	<b>Colour Rendering Index (Ra)</b>	80
<b>Frequency (Hz)</b>	50/60	<b>Diameter (mm)</b>	60
<b>Input current (mA)</b>	45	<b>Overall Length (mm)</b>	116.3
<b>Power Factor</b>	≥0.9	<b>Dimmable</b>	Yes
<b>CBCP (cd)</b>	-	<b>Weight (g)</b>	134

※ Specifications are subject to change without notice.

**Application**

- Hotels, restaurants, bars, cafes, Lobbies, corridors, stairwells

**Packaging Details**

<b>Packaging Type(Std.Pkg.Q'ty)</b>	Single Box (1pc)	Middle Box (10pc/box)	Outer carton (40pc/box)
<b>Dimensions ( L×W×H )</b>	65mm×65mm×130mm	TBD	TBD
<b>Gross Weight (g)</b>	TBD	TBD	TBD

**Customer Benefits**

- Energy saving, high efficacy
- Retrofit to conventional bulb
- Mercury Free
- Instant Light on
- CCT: 7 steps
- SAMSUNG Engineering Excellence