



**:: LUMOTRACK ::**



# Track LED systems - Spots



## TR4 - L05482

35° CE RoHS Compliant Class I IP20



Type:	Spot
Input power:	12 Watt
Dimmable:	No
Weight:	660 gram
Size:	Ø 76 x 129.5 x 211 mm
Material:	Aluminium
Ambient temp. (ta):	-20 to 35 °C
Max. temp. (tc):	70 °C
Expected lifetime:	50.000 h / 70%
Mounting:	Rail system

Power factor (λ):	0.90C		
Main voltage:	230/240 V, 50/60Hz		
Housing Colour	Article Affix		
Silver grey (RAL 9006)	-G		
Black (RAL 9005)	-B		
White (RAL 9010)	-W		
Light Colour	Power	Colour temp.	Article
○ Warm White	2.3W	2800K	L05482WW
○ Natural White	2.3W	4000K	L05482NW
○ Cool White	2.3W	6000K	L05482CW



## TR7 - L05484

35° CE RoHS Compliant Class I IP20



Type:	Spot
Input power:	17 Watt
Dimmable:	No
Weight:	1400 gram
Size:	Ø 121 x 178.5 x 265 mm
Material:	Aluminium
Ambient temp. (ta):	-20 to 35 °C
Max. temp. (tc):	70 °C
Expected lifetime:	50.000 h / 70%
Mounting:	Rail system

Power factor (λ):	0.97C		
Main voltage:	230/240 V, 50/60Hz		
Housing Colour	Article		
Silver grey (RAL 9006)	-G		
Black (RAL 9005)	-B		
White (RAL 9010)	-W		
Light Colour	Power	Colour temp.	Article
○ Warm White	n/a	2800K	L05484WW
○ Natural White	n/a	4000K	L05484NW



## DOUBLE TR7 - L05490

35° CE RoHS Compliant Class I IP20



Type:	Spot
Input power:	34 Watt
Dimmable:	No
Weight:	2400 gram
Size:	Ø 121 x 310 x 266 mm
Material:	Aluminium
Ambient temp. (ta):	-20 to 35 °C
Max. temp. (tc):	70 °C
Expected lifetime:	50.000 h / 70%
Mounting:	Rail system

Power factor (λ):	0.97C		
Main voltage:	230/240 V, 50/60Hz		
Housing Colour	Article		
Silver grey (RAL 9006)	-G		
White (RAL 9010)	-W		
Light Colour	Power	Colour temp.	Article
○ Warm White	n/a	2800K	L05490WW
○ Natural White	n/a	4000K	L05490NW





**TR12 - L05600**

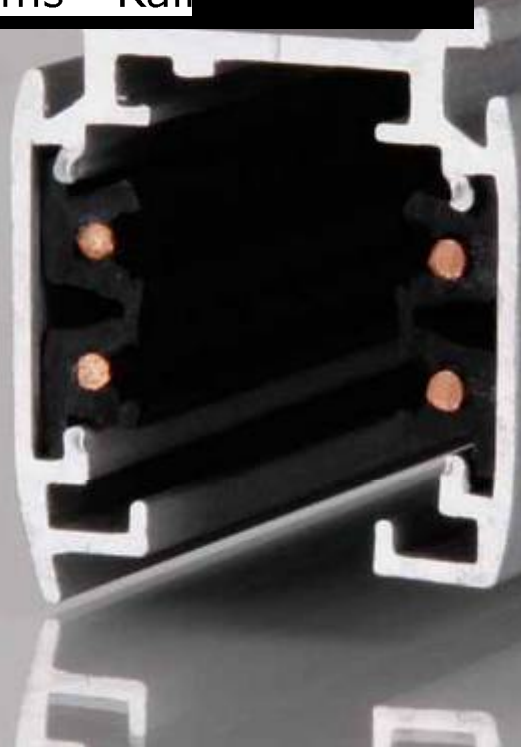


 Class I  IP20


Type:	Spot
Input power:	32 Watt
Dimmable:	No
Weight:	2000 gram
Size:	Ø 121 x 224 x 347 mm
Material:	Aluminium
Ambient temp. (ta):	-20 to 35 °C
Max. temp. (tc):	70 °C
Expected lifetime:	50.000 h / 70%
Mounting:	Rail system

Power factor (λ):	0.97C		
Main voltage:	230/240 V, 50/60Hz		
Housing Colour	Article		
Aluminium (Anodized)			
White (RAL 9010)	-W		
Light Colour	Power	Colour temp.	Article
 Warm White	n/a	2800K	L05600WW
 Natural White	n/a	4000K	L05600NW

## Track LED systems - Rail



### Lumotrack 3 phase rail straight 100 cm - L05493-1



Type:	Rail for Lumotrack system
Size:	32.2 x 36.4 x 1000 mm *
Material:	Aluminium
Mounting:	Surface

\* Can be cut to length with a fine hack saw



Colour	Article
Aluminium (Anodized)	L05493-1
Black (RAL 9005)	L05493-1-B
White (RAL 9010)	L05493-1-W

### Lumotrack 3 phase rail straight 200 cm - L05493-2



Type:	Rail for Lumotrack system
Size:	32.2 x 36.4 x 2000 mm *
Material:	Aluminium
Mounting:	Surface

\* Can be cut to length with a fine hack saw



Colour	Article
Aluminium (Anodized)	L05493-2
Black (RAL 9005)	L05493-2-B
White (RAL 9010)	L05493-2-W

### Lumotrack 3 phase rail straight 300 cm - L05493-3



Type:	Rail for Lumotrack system
Size:	32.2 x 36.4 x 3000 mm *
Material:	Aluminium
Mounting:	Surface

\* Can be cut to length with a fine hack saw



Colour	Article
Aluminium (Anodized)	L05493-3
Black (RAL 9005)	L05493-3-B
White (RAL 9010)	L05493-3-W



## Live end connector LEFT - L05494L



Type:	Mains connector for Lumotrack system
Size:	31.24 x 32.50 x 98.21 mm
Material:	Plastic
Mounting:	Surface
Colour:	Silver grey L05494L-B (Black) L05494L-W (White)

## Live end connector RIGHT - L05494R



Type:	Mains connector for Lumotrack system
Size:	31.24 x 32.50 x 98.21 mm
Material:	Plastic
Mounting:	Surface
Colour:	Silver grey L05494R-B (Black) L05494R-W (White)

## Mini joiner - L05495



Type:	Connection part for Lumotrack system
Size:	20 x 25.50 x 69.44 mm
Material:	Plastic
Mounting:	Surface
Colour:	Silver grey L05495-B (Black) L05495-W (White)

## Straight connector - L05496



Type:	Connection part for Lumotrack system
Size:	31.24 x 32.50 x 166 mm
Material:	Plastic
Mounting:	Surface
Colour:	Silver grey L05496-B (Black) L05496-W (White)

## L-joint connector LEFT - L05497L



Type:	Connection part for Lumotrack system
Size:	31.24 x 32.50 x 98.22 mm
Material:	Plastic
Mounting:	Surface
Colour:	Silver grey L05497L-B (Black) L05497L-W (White)

## L-joint connector RIGHT - L05497R



Type:	Connection part for Lumotrack system
Size:	31.24 x 32.50 x 98.22 mm
Material:	Plastic
Mounting:	Surface
Colour:	Silver grey L05497R-B (Black) L05497R-W (White)

**T-joint connector LEFT - L05498L1**



Type:	Connection part for Lumotrack system
Size:	31.24 x 32.50 x 166 mm
Material:	Plastic
Mounting:	Surface
Colour:	Silver grey L05498L1-B (Black) L05498L1-W (White)

**T-joint connector RIGHT - L05498R1**



Type:	Connection part for Lumotrack system
Size:	31.24 x 32.50 x 166 mm
Material:	Plastic
Mounting:	Surface
Colour:	Silver grey L05498R1-B (Black) L05498R1-W (White)

**X-joint connector - L05499**



Type:	Connection part for Lumotrack system
Size:	31.24 x 32.50 x 166 mm
Material:	Plastic
Mounting:	Surface
Colour:	Silver grey L05499-B (Black) L05499-W (White)

**Flexible connector - L05500**



Type:	Connection part for Lumotrack system
Size:	31.24 x 32.50 x 144 mm
Material:	Plastic
Mounting:	Surface
Colour:	Silver grey L05500-B (Black) L05500-W (White)

**End cap - L05501**



Type:	Connection part for Lumotrack system
Size:	31.45 x 32.50 x 31.32 mm
Material:	Plastic
Mounting:	Surface
Colour:	Silver grey L05501-B (Black) L05501-W (White)

**Lamp adaptor - L05505**



Type:	Connection part for Lumotrack system
Size:	31.04 x 54.50 x 93.50 mm
Material:	Plastic
Mounting:	Surface
Colour:	Silver grey L05505-B (Black) L05505-W (White)

**Lumotrack mount system - L05502**



Type:	Mount system
Mounting:	Surface
Colour:	White

**Lumotrack mount bracket - L05503**



Type:	Mount system
Mounting:	Surface
Colour:	White

**Mechanical adaptor - L05504**



Type:	Connection system
Mounting:	Surface
Colour:	White